

## Manhole cover with ventilation in cast iron-concrete frame D400 - extreme traffic loads

### Standard



Code	<b>KDB63</b>
Material	<b>Concrete, Cast iron</b>
Weight	<b>154 kg</b>
Norm	<b>EN124-2</b>
Package	<b>8 ks/pal</b>
Load class	<b>Extreme traffic load</b>

cover without hinge, horizontal PUR shock-absorbing lining on frame, horizontal and vertical PUR shock-absorbing lining on lid, without spring-loaded lid locking in frame

#### COVER:

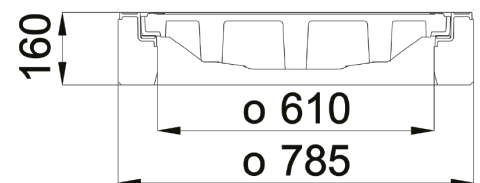
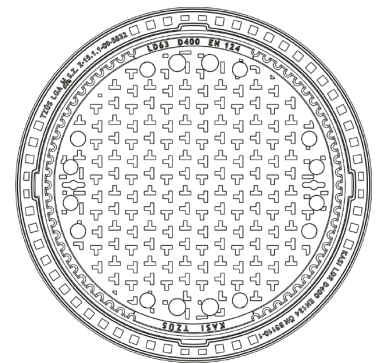
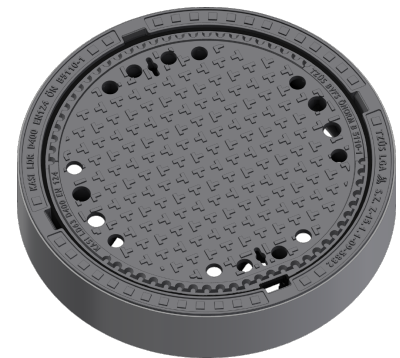
- | Lid weight 83 kg
- | Permits your own design/logo
- | Integrated KASI-PUR damping insert with high resistance
- | Cast iron without ventilation with non-slip design.

#### FRAME:

- | Frame height 160 mm, weight 71 kg
- | Use with BAR-V and BAR adjustment rings
- | Cast iron-concrete frame without trap mounting
- | Integrated PUR damping insert with high resistance
- | Suitable for places with extreme traffic loads

#### OTHER:

- | custom motif on the lid possible
- | Hatch comes without coating – painted options can be ordered



CUSTOM  
SOLUTIONS



DAMPING INSERT



HATCH WITHOUT  
HINGE

