

Manhole cover with ventilation in cast iron-concrete frame D400 - extreme traffic loads

Standard



Code	KDB61
Material	Concrete, Cast iron
Weight	161 kg
Norm	DIN1229, EN124-2
Package	8 ks/pal
Load class	Extreme traffic load

cover without hinge, horizontal PUR shock-absorbing lining on frame, horizontal and vertical PUR shock-absorbing lining on lid, without spring-loaded lid locking in frame

COVER:

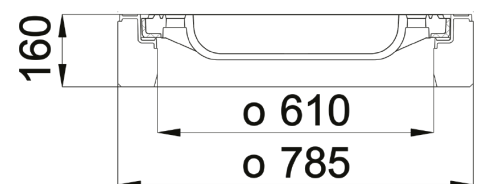
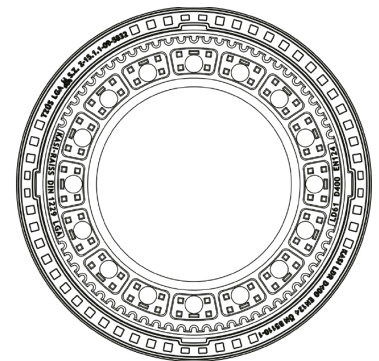
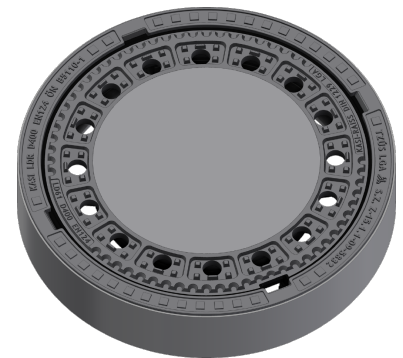
- | Lid weight 90 kg
- | Integrated KASI-PUR damping insert with high resistance
- | With concrete fill with ventilation – unattractive to thieves

FRAME:

- | Frame height 160 mm, weight 71 kg
- | Use with BAR-V and BAR adjustment rings
- | Cast iron-concrete frame without trap mounting
- | Integrated PUR damping insert with high resistance
- | Suitable for places with extreme traffic loads

OTHER:

- | Hatch comes without coating – painted options can be ordered



DAMPING INSERT



CONCRETE AND
CAST IRON LID



HATCH WITHOUT
HINGE

