

Manhole cover without ventilation in cast iron-concrete frame D400 - heavy traffic loads

Standard



Code	KDB05xxxOSA
Material	Concrete, Cast iron
Weight	154 kg
Norm	EN124-2
Package	8 ks/pal
Load class	Heavy traffic load

cover without hinge, horizontal PUR shock-absorbing lining, without spring-loaded lid locking in frame

COVER:

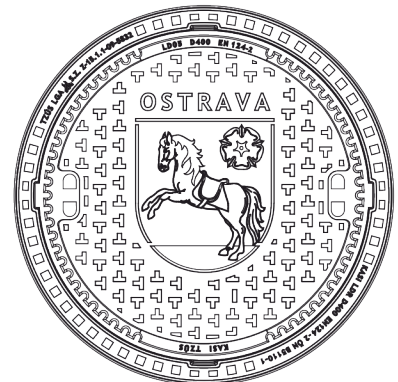
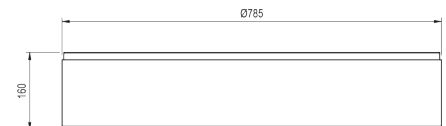
- | Cast iron with ventilation with anti-slip design.
- | Permits your own design/logo
- | Lid weight 83 kg

FRAME:

- | Cast iron-concrete frame without trap mounting
- | Frame height 160 mm, weight 71 kg
- | Use with BAR-V and BAR adjustment rings
- | Integrated PUR damping insert with high resistance

OTHER:

- | Hatch comes without coating – painted options can be ordered
- | Suitable for places with high traffic loads
- | custom motif on the lid possible



CUSTOM SOLUTIONS



DAMPING INSERT



HATCH WITHOUT HINGE

