

Water-gastight manhole cover in a cast iron frame

C250 - use max 0.5m in the roadway and truck parking lot



Code	KCLV16C4
Material	Cast iron
Weight	53 kg
Norm	EN124-2
Package	10 ks/pal

without hinge, PUR shock-absorbing lining - tunnel version, without spring-loaded lid locking in frame, watertight to 1 bar

COVER:

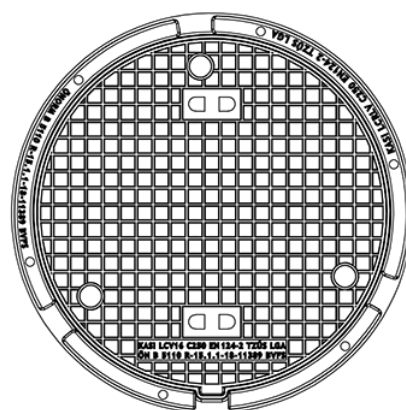
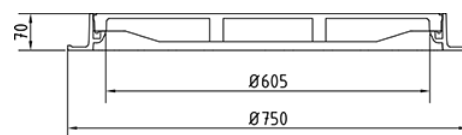
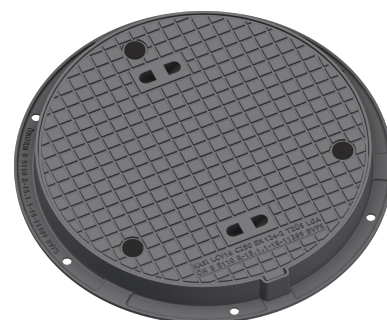
- For water-gastight sets
- Fitted with screws - stainless steel
- Lid weight 37kg

FRAME:

- Cast iron frame with foot without shoulder for trap
- Frame height 70 mm
- Use with BAR-V and BAR adjustment rings

OTHER:

- The cover is supplied with a black finish
- Water-gastight cover with certified resistance to 1 bar



**WATER- AND GAS-
TIGHT**



QUIET DESIGN