

## Manhole cover without ventilation in cast iron frame with foot

C250 - use max 0.5m in the roadway and truck parking lot

## Europa 7



Code	KCLL7K
Material	Cast iron
Weight	44 kg
Norm	EN124-2
Package	20 ks/pal

cover with hinge, horizontal PUR shock-absorbing lining, spring-loaded lid locking in frame

### COVER:

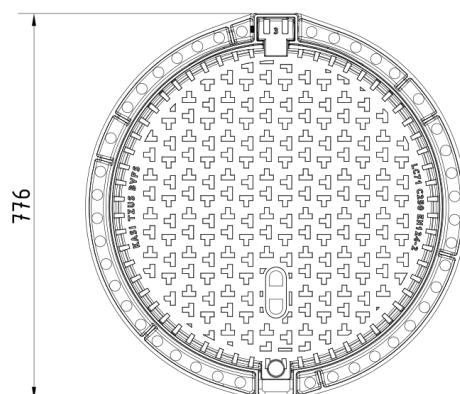
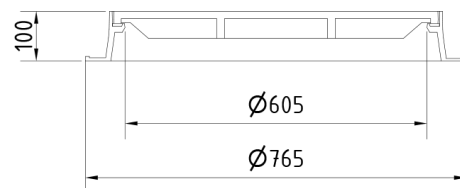
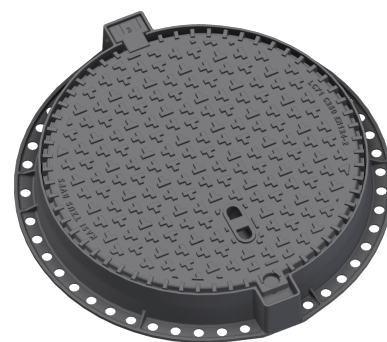
- Cast iron without ventilation with anti-slip design
- Machined lid seating surface to 0.3mm
- Hinge with possibility of removal from the frame
- Safety lock at 90°
- Custom theme/logo option

### FRAME:

- Cast iron frame with foot without shoulder for trap
- Frame height 100 mm
- Use with BAR-V and BAR adjustment rings
- Integrated PUR damping insert with high resistance

### OTHER:

- The cover is supplied without surface treatment - painted variants can be ordered
- Option of screw locking
- added lid opening - pocket for crowbar
- Lid safety lock at 90°
- custom lid motif possible



CUSTOMER  
SOLUTIONS



DAMPING INSERT



MAX. OPENING  
ANGLE

