

Manhole cover with ventilation in a cast iron frame with foot

B125 - parking areas for passenger vehicles

Standard

Code	KBL04
Material	Cast iron
Weight	34 kg
Norm	EN124-2
Package	20 ks/pal

cover without hinge, without shock-absorbing lining, without spring-loaded lid locking in frame

COVER:

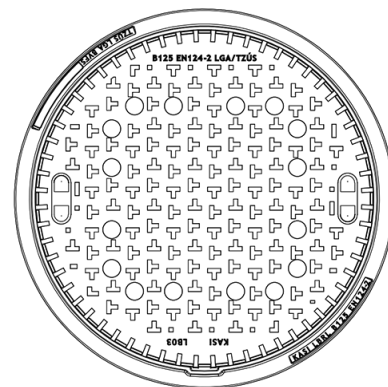
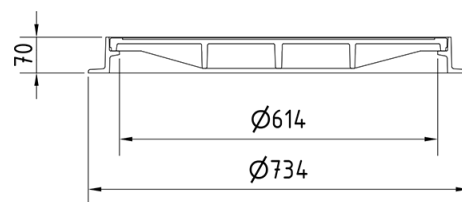
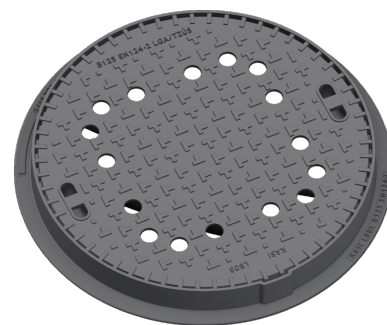
- | Cast iron with ventilation and anti-slip design.
- | Lid weight 22kg
- | Custom theme/logo option

FRAME:

- | Cast iron frame with foot without shoulder for trap
- | Frame height 70 mm
- | Use with BAR-V and BAR adjustment rings

OTHER:

- | The cover is supplied without surface treatment - painted variants can be ordered
- | custom lid motif possible



CUSTOMER
SOLUTIONS

