

Manhole cover without ventilation in cast iron-concrete frame

B125 - pedestrian zones and parking areas

Standard



Code	KBB01
Material	Concrete, Cast iron
Weight	99 kg
Norm	EN124-2
Package	12 ks/pal

cover without hinge, without shock-absorbing lining, without spring-loaded lid locking in frame

COVER:

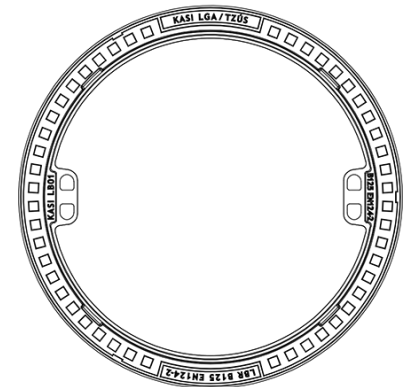
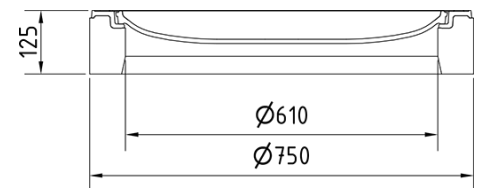
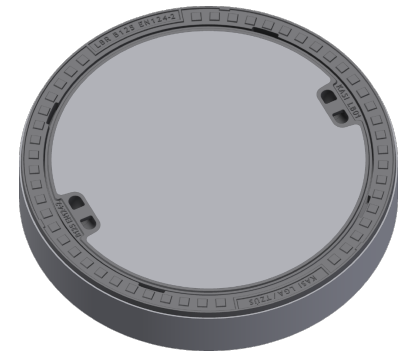
- | With concrete fill without ventilation – unattractive to thieves
- | Lid weight 53 kg

FRAME:

- | Cast iron-concrete frame without trap mounting
- | Frame height 125 mm, weight 46 kg
- | Use with BAR-V and BAR adjustment rings

OTHER:

- | Hatch comes without coating – painted options can be ordered



CONCRETE AND
CAST IRON LID

