

## Watertight manhole cover in cast iron frame

E600 - extreme loads

# Standard



Code	<b>K8ELV14CS</b>
Material	<b>Cast iron</b>
Weight	<b>132 kg</b>
Norm	<b>EN124-2</b>
Package	<b>8 ks/pal</b>
Load class	<b>Moderate traffic load</b>

without hinge, PUR shock-absorbing lining - tunnel version, without spring-loaded lid locking in frame, watertight to 2 bar

### COVER:

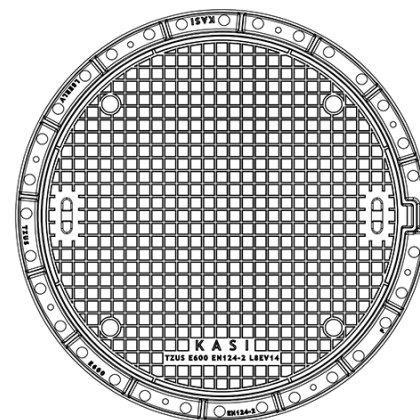
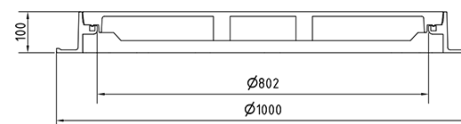
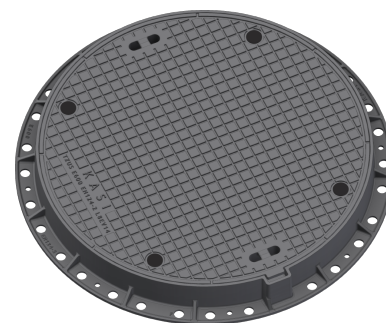
- | For waterproof sets
- | Lid weight 92 kg

### FRAME:

- | Frame height 100 mm, weight 40 kg
- | Cast iron frame with base without trap mounting

### OTHER:

- | Watertight hatch with certified resistance to 2 bar
- | Hatch comes with black finish



**WATER AND GAS-TIGHT**



**HATCH WITHOUT HINGE**



**QUIET DESIGN**

