

Manhole cover without ventilation in spreading frame

E600 - extreme loads

Europa 9



Code	AKEI95
Material	Concrete, Cast iron
Weight	220 kg
Package	6 ks/pal
Load class	Heavy traffic load

cover with hinge, KASI PUR vertical and horizontal shock-absorbing lining on lid, with spring-loaded lid locking in frame

COVER:

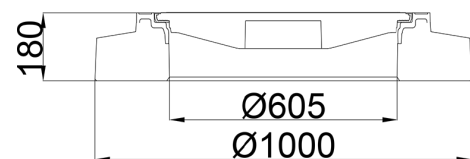
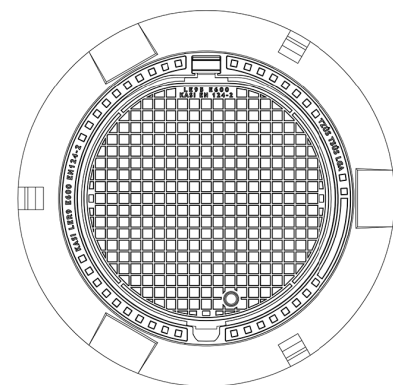
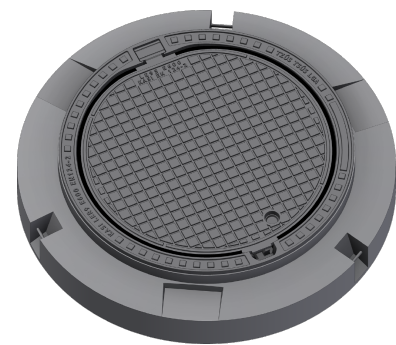
- | Integrated KASI-PUR damping insert with high resistance
- | Hinge secured preventing removal from frame
- | Safety locking at 90°, max. opening 120°
- | Cast iron without ventilation with quiet design.
- | Permits your own design/logo

FRAME:

- | Spreading frame 1000 mm without trap mounting
- | Frame height 180 mm, weight 173 kg
- | Machined bearing surface of the frame to 0.1 mm
- | Use with BAR-V and BAR adjustment rings
- | Three handling hinges

OTHER:

- | Hatch comes without coating – painted options can be ordered
- | Option with screw locking
- | Suitable for places with high traffic loads
- | Safety locking of the lid at 90°, max. opening 120°
- | custom motif on the lid possible



CUSTOM SOLUTIONS



DAMPING INSERT



MAX. OPENING ANGLE



THEFT PROTECTION



QUIET DESIGN

