

Manhole cover with ventilation in the distribution frame

E600 - areas exposed to high loads from heavy machinery

Europa 9

Code	AKEG92
Material	Concrete, Cast iron
Weight	334 kg
Package	5 ks/pal
Load class	Extreme traffic load

cover with hinge, KASI PUR vertical and horizontal shock-absorbing lining on lid, with spring-loaded lid locking in frame

COVER:

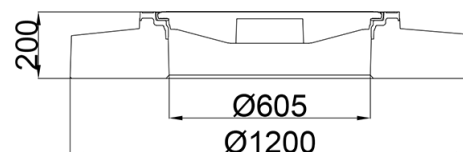
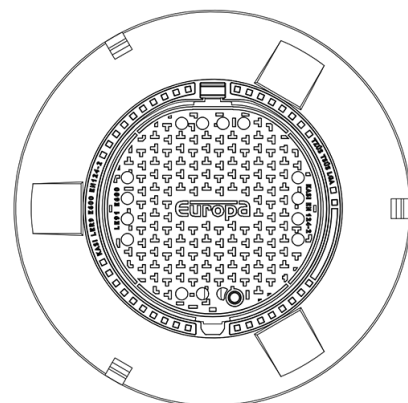
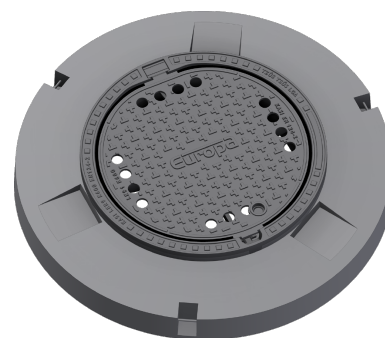
- Integrated KASI-PUR damping insert with high resistance
- Cast iron with ventilation and anti-slip design.
- Hinge secured against removal from the frame
- Safety lock at 90°
- Lid weight 45kg

FRAME:

- Distribution frame 1200mm without mounting for catcher
- Frame height 200 mm
- Machined frame contact surface to 0.1mm
- Use with BAR-V and BAR adjustment rings
- Three handling hinges

OTHER:

- The cover is supplied without surface treatment - painted variants can be ordered
- Option of screw locking
- Suitable for places with extreme traffic load
- Lid safety lock at 90°
- custom lid motif possible



CUSTOMER
SOLUTIONS



DAMPING INSERT



MAX. OPENING
ANGLE



ANTI-THEFT
PROTECTION