

Manhole cover with ventilation in spreading frame

D400 - heavy traffic loads

Europa 9



Code	AKDI92
Material	Concrete, Cast iron
Weight	214 kg
Package	6 ks/pal
Load class	Heavy traffic load

cover D400 with hinge, KASI PUR shock-absorbing lining, spring-loaded lid locking in frame

COVER:

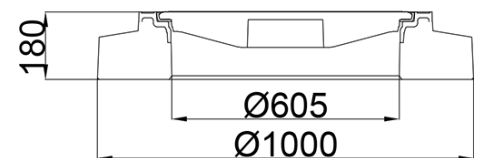
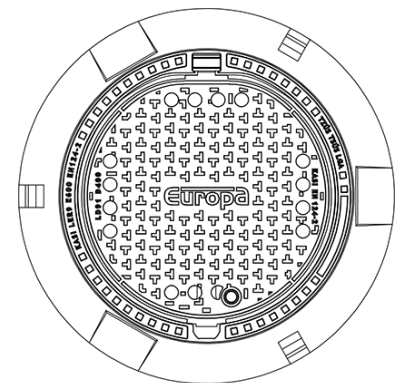
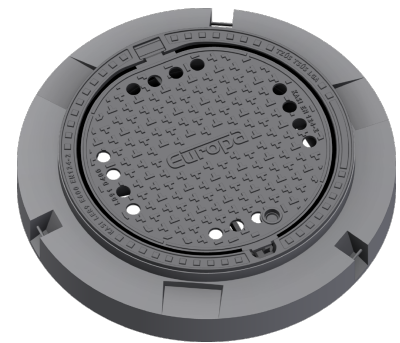
- | Integrated KASI-PUR damping insert with high resistance
- | Cast iron with ventilation with non-slip design.
- | Hinge secured preventing removal from frame
- | Safety locking at 90°, max. opening 120°
- | Lid weight 41 kg

FRAME:

- | Spreading frame 1000 mm without trap mounting
- | Frame height 180 mm, weight 173 kg
- | Machined bearing surface of the frame to 0.1 mm
- | Use with BAR-V and BAR adjustment rings
- | Three handling hinges

OTHER:

- | Hatch comes without coating – painted options can be ordered
- | Option with screw locking
- | Suitable for places with high traffic loads
- | Safety locking of the lid at 90°, max. opening 120°
- | custom motif on the lid possible



CUSTOM SOLUTIONS



DAMPING INSERT



MAX. OPENING ANGLE



THEFT PROTECTION

