

## Inlet grille in cast iron frame

## Standard



Code	<b>KML36</b>
Material	<b>Cast iron</b>
Weight	<b>108 kg</b>
Norm	<b>DIN19583, DIN1229, EN124-2</b>
Package	<b>16 ks/pal</b>

Grate 500x500mm, F900 for street gullies.

### COVER:

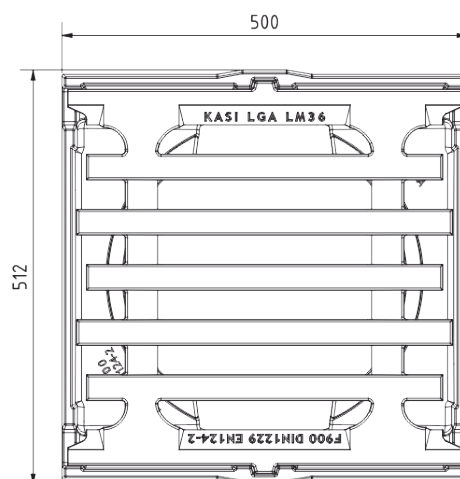
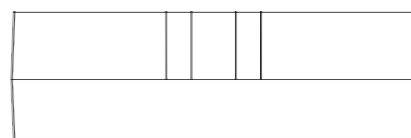
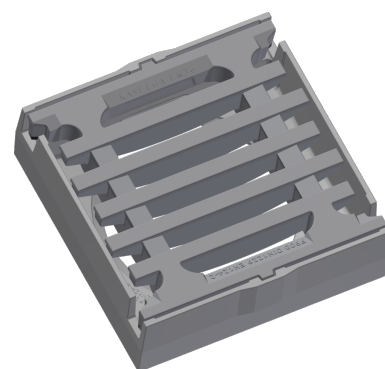
- Straight grille between ribs 35 mm
- Detachable connection of the grille to the frame
- Inlet cross-section 910 cm<sup>2</sup>

### FRAME:

- Cast iron frame with mounting for trap
- frame height 160 mm

### OTHER:

- Place on the 10A alignment ring.
- There must be at least a 20mm high mortar joint between the frame and the top of the drain with a strength of at least 45MPa.



RAINWATER  
DRAINAGE