

Inlet grate in cast-iron concrete frame

C250 - use max 0.5m into the roadway



Code	KMC01P
Material	Concrete, Cast iron
Weight	90 kg
Norm	EN124-2
Package	12 ks/pal

Obrubníková vpust' 530x500mm pro uliční vpusti třída zatížení C250

COVER:

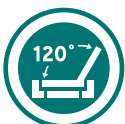
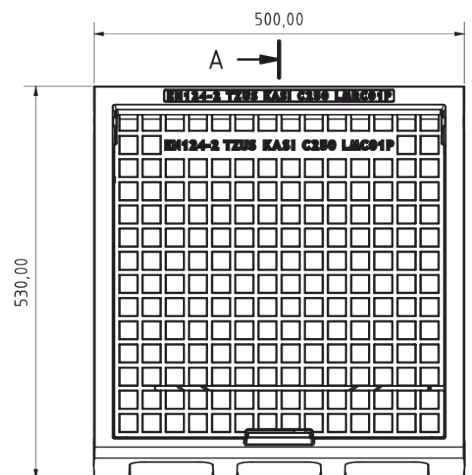
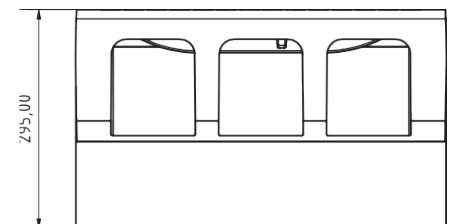
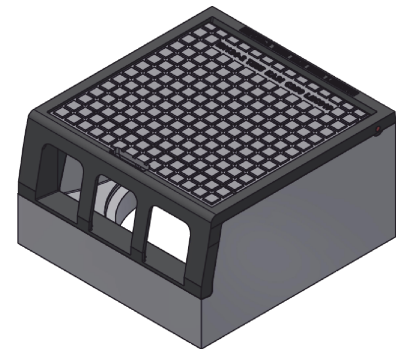
- | Možnost uzamčení šroubem
- | Vtokový průřez mříže 1200cm²
- | Vtokový průřez mříže 665cm²
- | Hinge secured with pivot preventing removal from frame
- | Non-detachable grate-frame connection

FRAME:

- | Cast iron-concrete frame with trap mounting
- | PUR damping insert on frame resistant to oil and defrosting agents

OTHER:

- | Mount on adjustment ring 10A.
- | Pouze na umístění do mostních konstrukcí.
- | Mortar connection with a strength of at least 45 MPa at least 20 mm high is required between the frame and the top part of the inlet



MAX. OPENING
ANGLE



THEFT
PROTECTION



RAINWATER
DRAINAGE SYSTEM

