

Inlet grate in cast-iron concrete frame

C250 - use max 0.5m into the roadway

Standard



Code	KM56
Weight	186 kg
Norm	EN124-2
Package	6 ks/pal

Mříž 1000 x 600 pro Horskou vpusť.
Pro manipulaci jsou nutná tři závěsná oka HLMZ16.

COVER:

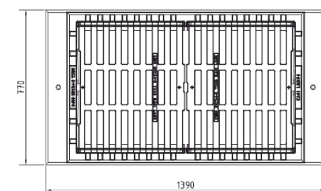
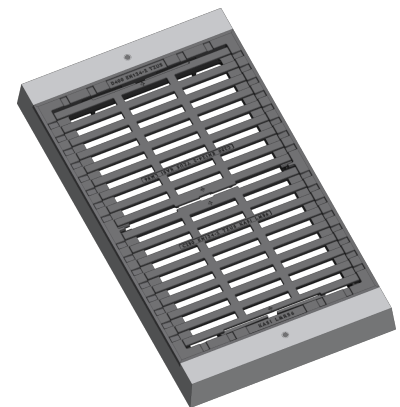
- Detachable grate-frame connection
- Grate with conventional ribs.

FRAME:

- Litino-betonový rám bez osazení pro lapač
- PUR damping insert on frame resistant to oil and defrosting agents
- Frame height 120mm

OTHER:

- Použití pouze pro schválené Horské vpusti
- Mortar connection with a strength of at least 45 MPa at least 20 mm high is required between the frame and the top part of the inlet



DAMPING INSERT



RAINWATER
DRAINAGE SYSTEM

