

Inlet grille in cast iron frame

D400 - heavy traffic load



Code	KM11RD
Material	Cast iron
Weight	48 kg
Norm	EN124-2
Package	20 ks/pal

Grate 300x500mm for Curb King.

COVER:

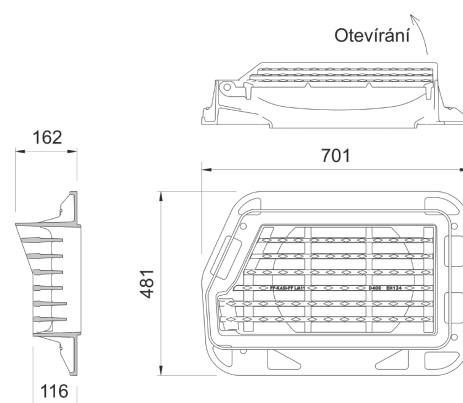
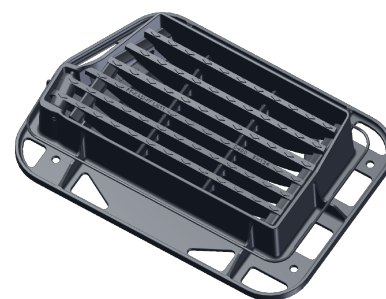
- Hinge secured with a pin against removal from the frame
- Grille curved between ribs 35 mm
- Non-detachable connection of the grille to the frame

FRAME:

- Cast iron frame with mounting for trap
- frame height 100 mm

OTHER:

- Place on the 10A alignment ring.
- There must be at least a 20mm high mortar joint between the frame and the top of the drain with a strength of at least 45MPa.



**MAX. OPENING
ANGLE**



**ANTI-THEFT
PROTECTION**



**RAINWATER
DRAINAGE**